

PYRAMID

activity report 2021/22

# Welcome to our Activity Report for 2021/22

Cover image: YoYos

It has been another really busy and exciting year at Pyramid, with our groups thankfully being able to meet face-to-face again and to create lots of celebratory, joyous, challenging, and ground-breaking work. Despite continuing challenges around Covid our groups returned to face-to-face work, found their feet again and created some beautiful and celebratory work – including brightening up physical public spaces with large-scale versions of work created during lockdown. Next Step Pyramid created a beautiful mural for the Corn Exchange, our Eden Group made an amazing mural for our project space and our Legends Group began their designs for work which has brightened up the garden space at Pyramid.

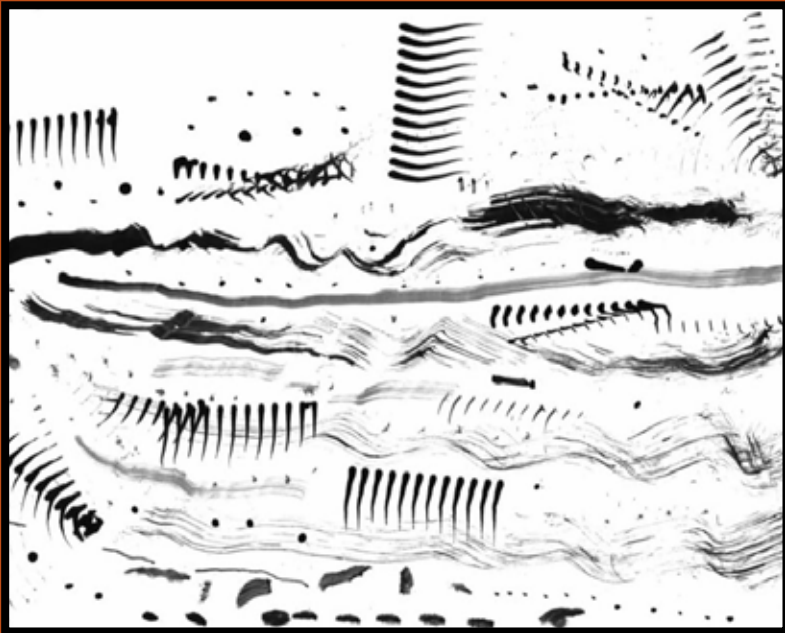
The Bradford-based Why Don't We Group, who joined Pyramid during lockdown, began to meet face-to-face at Artworks Creative Communities, and with artists now travelling from York and Wakefield to work with us we can begin to say that Pyramid works region-wide as well as across Leeds.

We continued to break new ground in the ways in which we work with artists with learning disabilities. Our BEYOND Artist Development Scheme supported four artists to explore new skills and create new work which culminated

in a series of exhibitions at Leeds Industrial Museum and Archive. Ultimate Thunder used remote recording technology to work on their awesome debut album. All our Development Teams proved that artists with learning disabilities can make world-class artwork. Our Irregular Art Schools project, a new partnership with the University of Leeds School of Fine Art, began to explore ways in which institutions can better support the professional development of artists with learning disabilities. Through partnerships such as these, and through the work of our Autism and Learning Disability Digital Inclusion Coordinator with 100% Digital Leeds, we are constantly exploring ways in which people and artists with learning disabilities can achieve more in their art and in their lives.

I would like to say a big thank you to our partners and funders (detailed on the final page), to our Trustees and our amazing team of Core Workers, Artist Facilitators and Volunteers, to all the staff at Pyramid and most of all the groups of amazing artists with learning disability and autism that continue to make and share great art.

James Hill, Director



Bramley :: Potternewton :: Rothwell

**Aspire**

# BEYOND Artist Development Scheme (BADS)

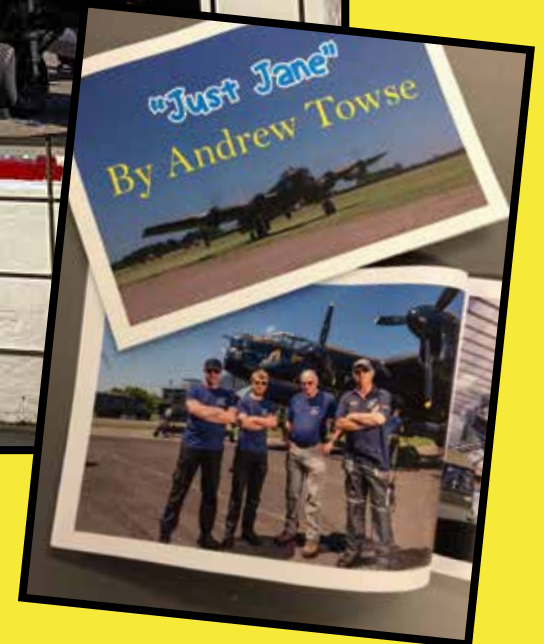


Stephen Harvey



Howard Haigh

# BEYOND Artist Development Scheme (BADS)



Andrew Towse

# BEYOND Artist Development Scheme (BADS)

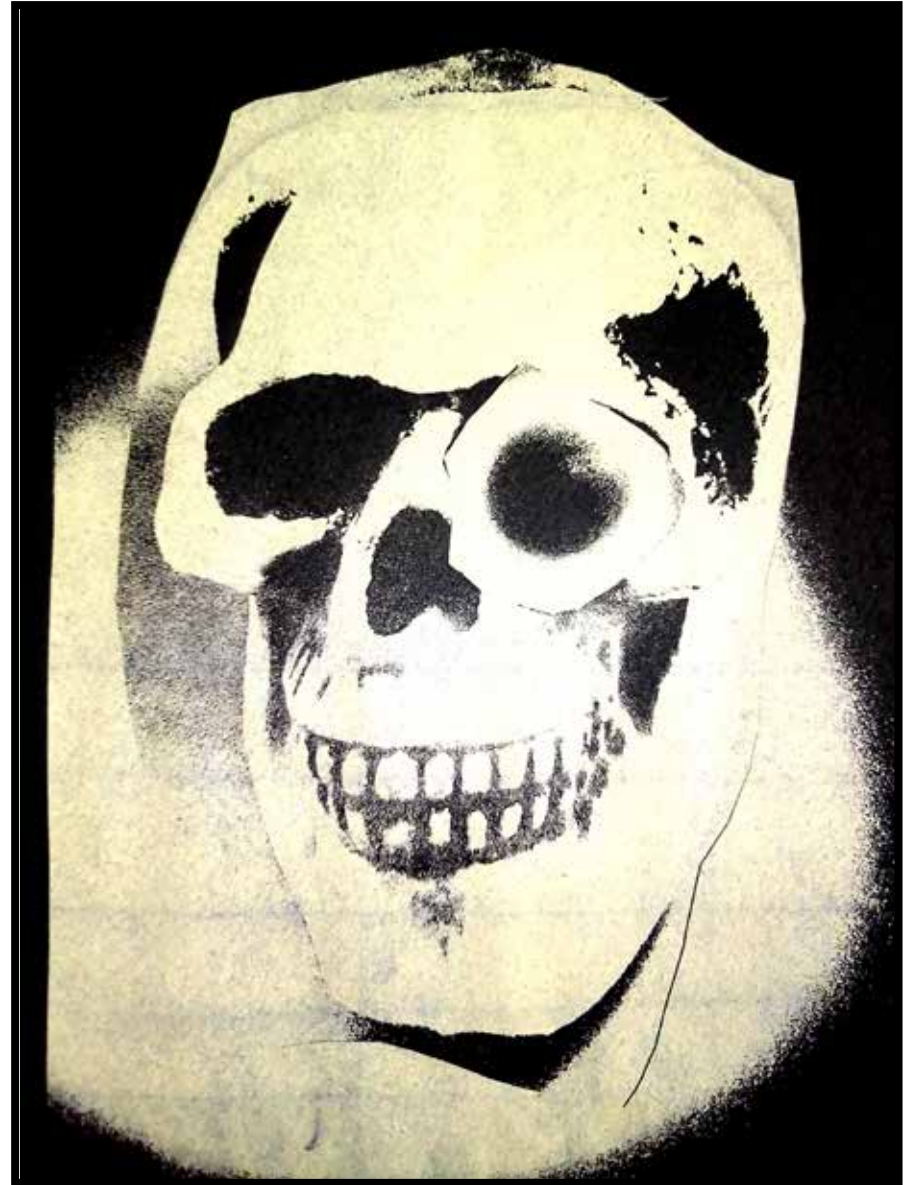


Jem Clancy

# Development Teams



Adam Bainbridge



Alfie Fox

# Development Teams

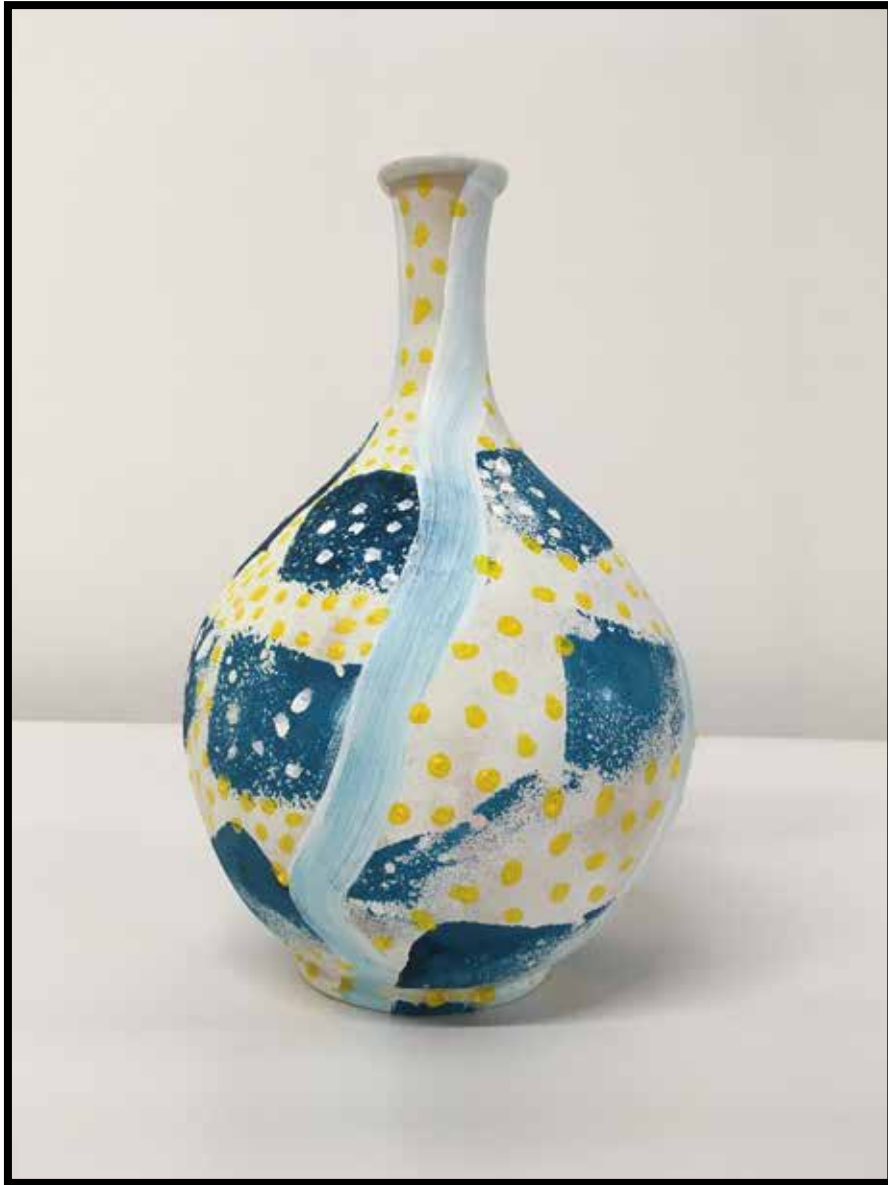


Ben Malcolm

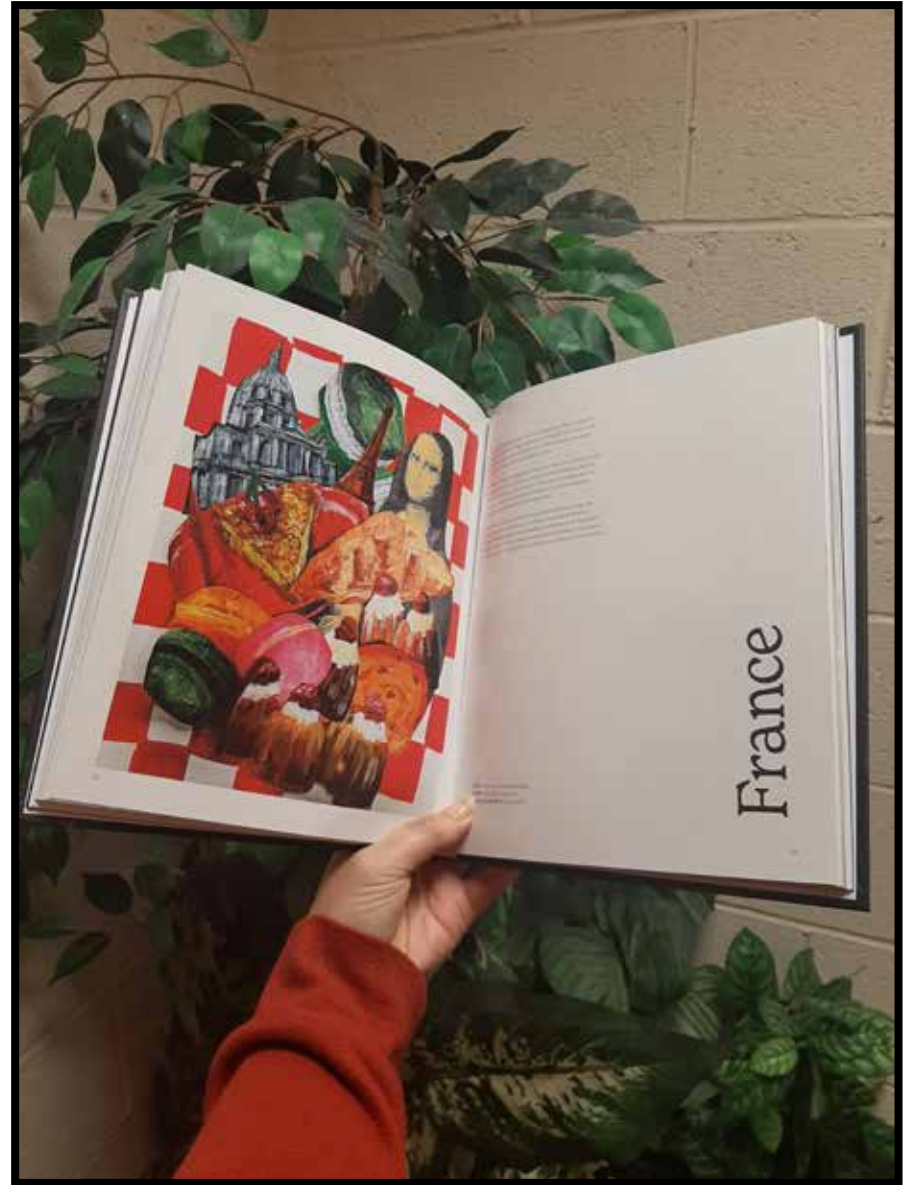


Heather Kelly

# Development Teams



Ria



William Stapleton



Mural in the Pyramid Studio

**Eden**



Weasels in Leeds

52



Weasels in Leeds

53

Weasels in Leeds  
Dominic Bennett



**High Rise Bramley**



The River



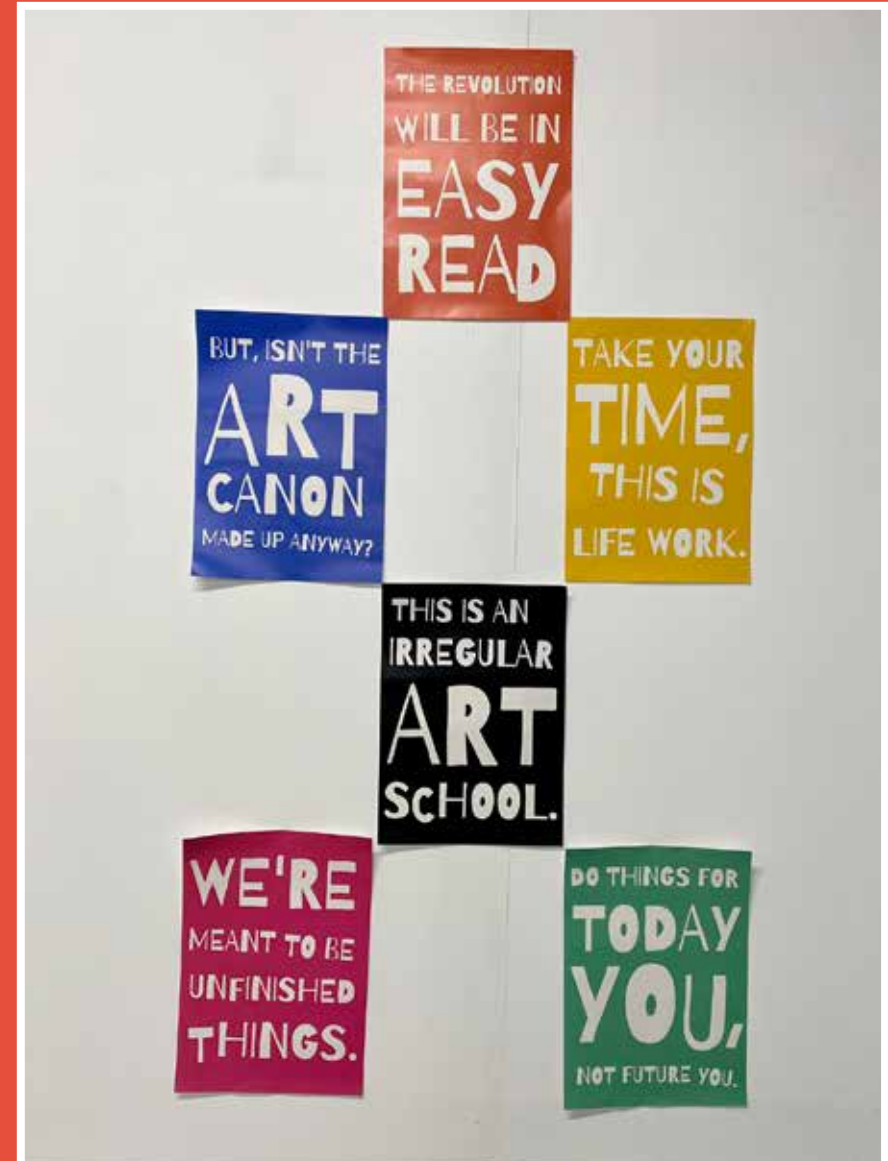
**High Rise Movement**

# High Rise Music



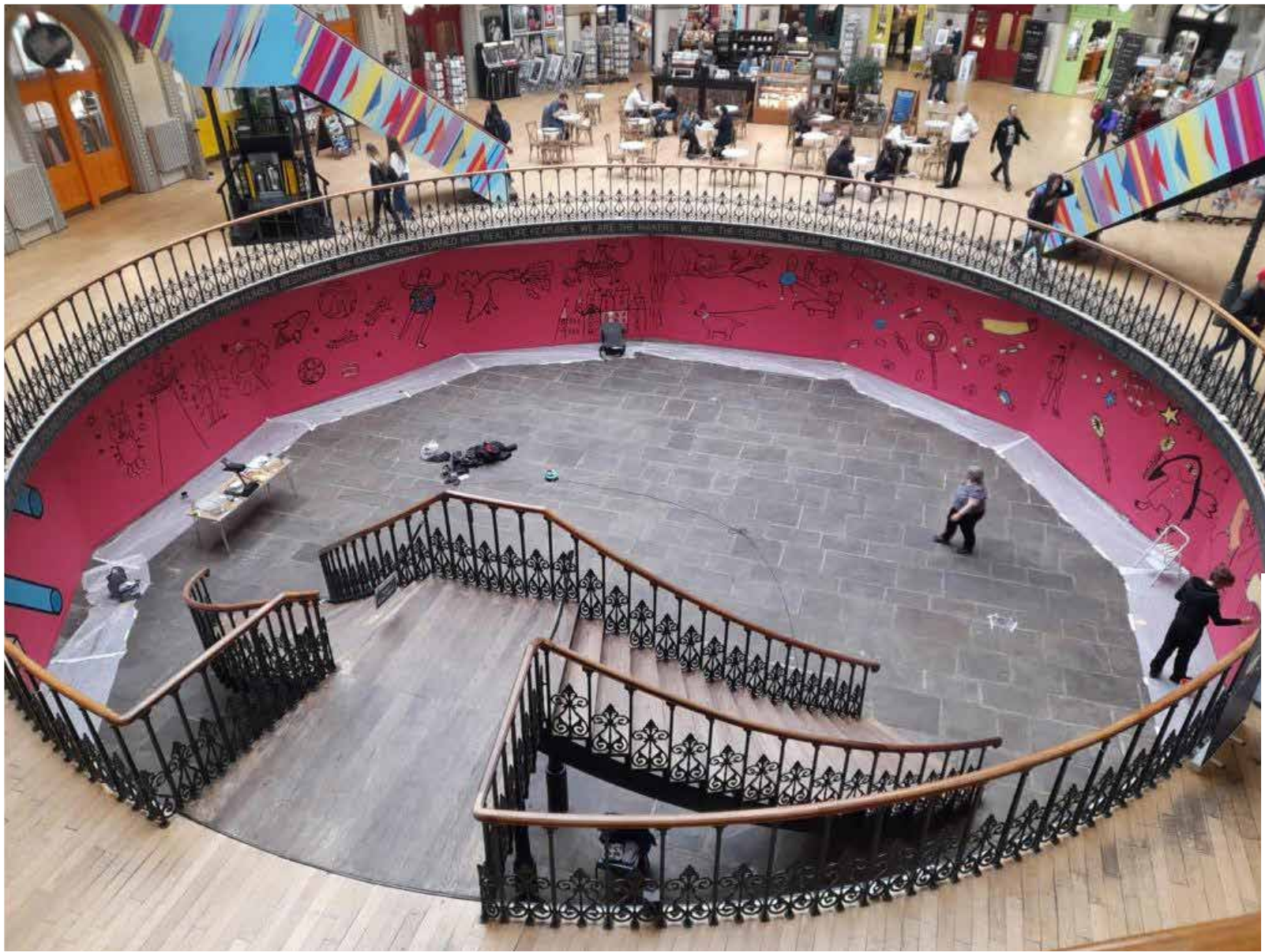
The River

# Irregular Art Schools





# Next Step Pyramid

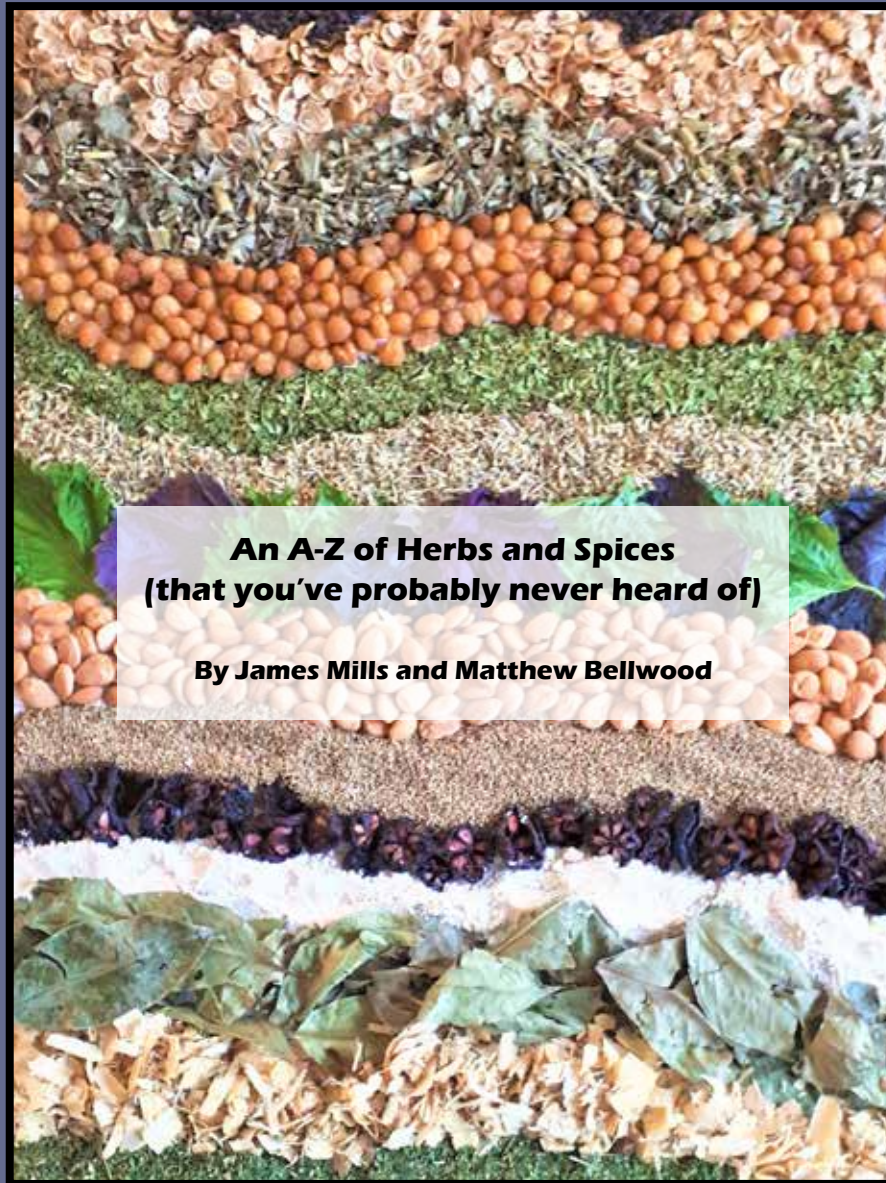


Mural at Leeds Corn Exchange

Digital Inclusion Project



# Platform

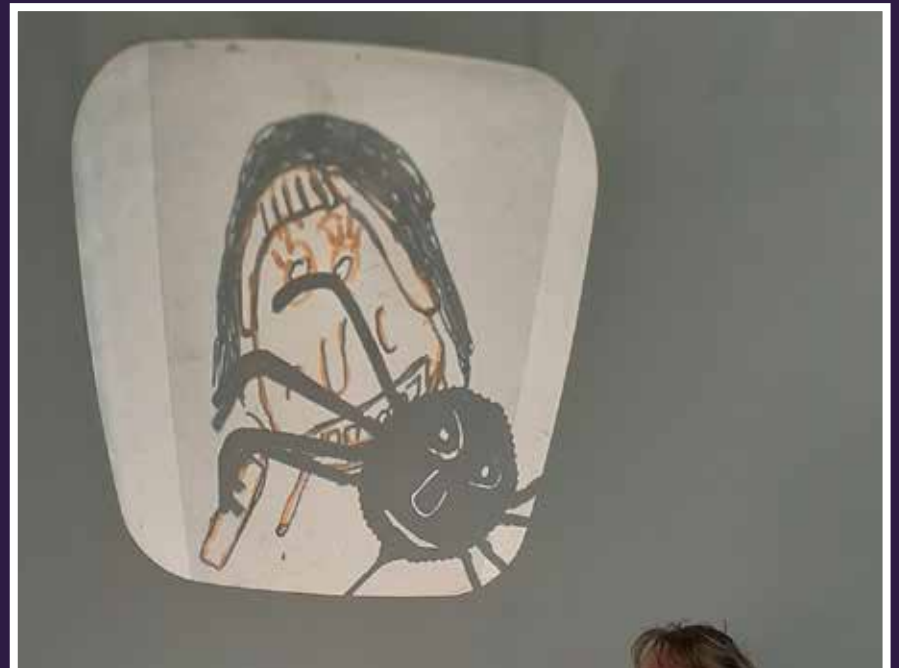


James Mills



Maisie





Projections

**Ribblehead**



Alien Baby Goes to Blackpool (watch on our YouTube channel)



Why Don't We



Self portraits





Supported using public funding by  
**ARTS COUNCIL  
ENGLAND**



**arts@leeds**



Leeds  
Community  
Foundation

the Mohn  
Westlake foundation

phone:  
0113 234 6040

text:  
07931 215 999

email:  
info@pyramid.org.uk



Pyramid  
62 Barkston House  
Croydon Street  
Leeds LS11 9RT

Registered Charity No. 1094134  
Company Limited by Guarantee No. 4498181