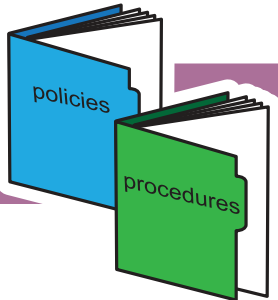


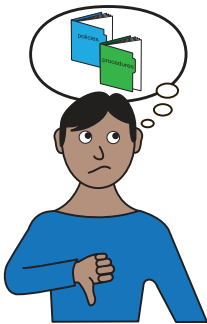


policies and procedures

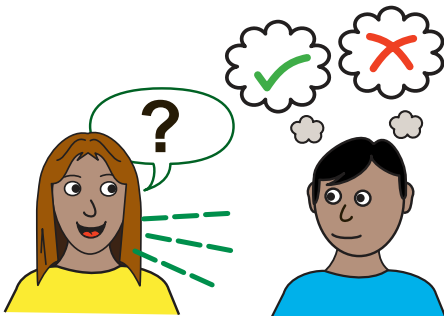


Our 'policies and procedures' are the rules about how we do things at Pyramid.

Following our policies and procedures helps to keep everybody safe.

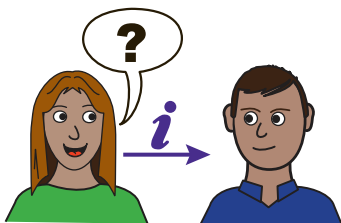


The policies and procedures also tell us what to do if something goes wrong.

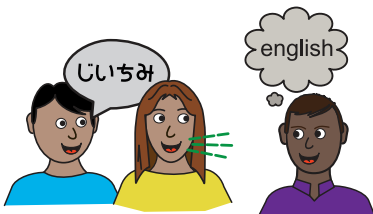


It is important that everybody at Pyramid can access and understand our policies and procedures.

The office team can help with this.



Please contact us if you would like support to read or understand this policy.



We can meet with you to talk about it. Or we can provide information in different format / language to suit your needs.



phone: **0113 234 6040**
text: **07531 215 999**
email: **info@pyramid.org.uk**



PYRAMID

Environmental Policy

Pyramid is committed to reducing its environmental impact.

Pyramid will:

- Obey all laws and regulations about protecting the environment
- Think about the environmental impact when making decisions
- Encourage all Pyramid members and workers to help protect the environment

Supplies and Equipment

- We will only print things if we really need to
- We will try to buy recyclable and environmentally friendly products
- We will see if we can share or rent equipment before buying new
- We will reuse and recycle as much as possible
- We will only use licenced organisations to dispose of waste

Energy and Water

- We will switch off lights and electricals when we're not using them
- We will only use the heating when we really need it
- We will consider the energy efficiency of new products before buying them

Travel and Transport

- We will only travel using vehicles when we really need to
- We will use email and telephone, to reduce the need to travel
- We will use local companies where possible, to reduce our carbon footprint