



PYRAMID

art movement music

for people with learning disabilities

Group	For	Day and Time	Location	Cost
YoYos	LD ages 8-17	Tuesdays, 6.00pm – 8.00pm	Holbeck	Free
Next Step Pyramid	LD ages 18-30	Thursdays, 6.30pm – 8.30pm	Holbeck	£20
Ribblehead	LD adults	Fridays, 10.00am – 12.00pm	Holbeck	£20
Eden	LD adults	Thursdays, 10.00am – 12.00pm	Holbeck	£20
Legends	LD ages 55+	Wednesdays, 10.00am – 12.00pm	Holbeck	£20
High Rise Movement	PMLD adults	Thursdays 12.30pm – 2.30pm	Bramley	£30
High Rise Music	PMLD adults	Fridays, 10.00am – 12.00pm	Bramley	£30
Singing Group	Everyone	Alternate Saturdays, 11.00am – 1.00pm	Holbeck	£10
Development Teams	Adults	Bespoke arrangements to suit the individual. Please contact us.		

‘LD’ means for people with a learning disability and/or autism.

‘PMLD’ means for people with profound and multiple learning disabilities and/or severe autism.

To join a group, make a referral or to find out more about our offer, please get in touch:

phone: 0113 234 6040 **email:** info@pyramid.org.uk

Pyramid works with people with learning disabilities in groups and one to one to discover, explore and enjoy the arts and to develop as artists to the full extent of their abilities and ambitions.

We work with people with all levels of ability and have specialised sessions for people with profound and multiple learning disabilities.

At Pyramid, art means all art forms: painting, drawing, music, dance, theatre, film, photography, sculpture – anything our members want to try! Activities are run by a group of highly experienced freelance artists with expertise in all art forms.

Pyramid groups are social. They are fun and members often stay for many years, forming long-term friendships, developing self-confidence and showing improved social skills and good mental health.

If our members want to develop as individual artists, we can support them with personal tuition in their chosen artform and in their professional development, for example, applying for arts funding, putting on solo exhibitions and sharing and selling their work online.

The creative work of both our groups and individual artists is shared publicly through our programme of exhibitions and events throughout the year, in high profile venues such as The Tetley, Northern Ballet and Interplay Theatre.

www.pyramid.org.uk

Discover Groups

Our Discover programme is for people with mild-moderate learning disabilities.

Each group meets for 38 weeks per year, completing three projects over three terms.

Every project is led by a professional freelance Arts Facilitator with expertise in the chosen artform (e.g. sculptor, dancer, film-maker) and a Pyramid Core Worker, who has been trained by us in inclusive arts practice. The Core Worker makes sure every member is able to participate in sessions to the fullest of their ability. Groups are further supported by a team of trained arts volunteers.



The Pyramid View on Leeds Art Gallery, Legends Group

Discover Groups



The Eden Group backstage at Leeds Art Gallery, preparing for British Art Show 8

Discover Groups are open to people who may not have had any experience of participatory arts before. We don't expect any prior knowledge and people learn as they go, entirely at their own pace. We do projects, not 'courses'; there is no pressure to achieve a particular learning outcome and our measure of success is someone's level of enjoyment and engagement with the arts, not the work that they produce.

In addition to coming to sessions at Pyramid, we arrange visits and exchanges with other cultural venues and organisations, both locally and further afield. There are many opportunities to engage with arts and creativity in a supported and accessible way.

High Rise Groups

Our High Rise programme is for people with profound and multiple learning disabilities.

Each group meets for 38 weeks per year, completing three projects over three terms.

Every project is led by a professional freelance Arts Facilitator and a Pyramid Core Worker, who has been trained by us in inclusive arts practice. The Core Worker makes sure every member is able to participate in sessions to the fullest of their ability. Each group also has a Supporting Arts Facilitator so we can ensure every member gets enough individual staff time and attention. Groups are further supported by a team of trained arts volunteers.



The High Rise Movement Group

High Rise Groups



Permanent sculpture at Leeds Industrial Museum, by High Rise Visual Arts

High Rise groups are focused on particular artforms. We currently run a music group and a movement group. When someone joins a High Rise group, we spend time getting to know them, using techniques such as Intensive Interaction. Our groups are not time-limited. We see great outcomes for members because small changes in responses and behaviour can be recognised and built on, as understanding and trust develops.

Our High Rise groups have a strong track record of producing new music and devised theatre, which we share through public performances. The groups have performed at Seven Arts, Interplay Theatre, on Millennium Square for Light Night and at the Leeds Lieder Festival.

Development Teams

Development Teams (or “D-Teams”) involve one artist with a learning disability working one to one with a non-learning disabled professional artist.

The format works well for:

- People with a learning disability who have an interest or skill in a particular art form that they want to develop
- People with a learning disability who want to try creative activities but whose support needs are such that group work is not appropriate or possible for them

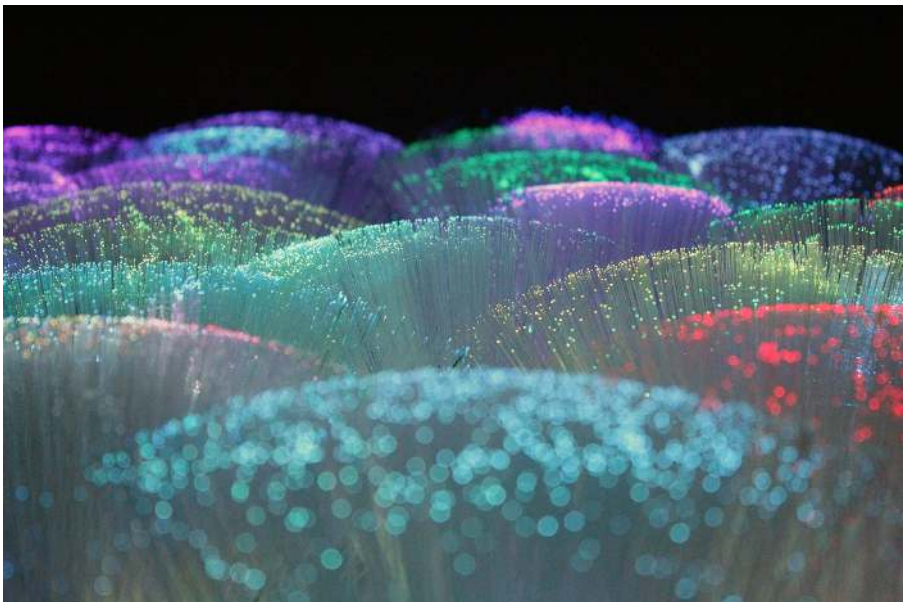
The type and length of sessions are entirely tailored to the needs of the individual and vary from one or two hours a week at home, to two full days a week at Pyramid. We can also arrange transport and personal care support if required.

Using the D-Team format, members can work to develop their practice to the fullest extent of their abilities and their aspirations. This might include:

- Working with a professional artist to practice and develop a particular skill
- Taking part in exhibitions or performances as a solo artist
- Writing arts funding applications for project money or commissions
- Developing a website or artist portfolio



Exhibition by D-Team artist Liam Hirst at The Tetley



Photograph by D-Team D4AT (Andrew Towse and Carl McCarron)

Case Study: Stephen

Stephen has been coming to Pyramid for many years. He works with the Ribblehead Group on Fridays, and also does his own work as part of a Development Team. He has exhibited his solo work at Leeds Industrial Museum and The Tetley.



“I’ve made lots of friends at Pyramid down the years and I love being able to see them every week, whatever project that we work on.

“I really like as well though that I get to work on my own projects and expand my own ideas, outside of the group, and that I get to visit other places and use their resources if Pyramid don’t have what I need. Like, I regularly get to use the letter press printers at the Industrial Museum at Armley Mills for my work.

“I like finding out about other organisations who do similar work and I have been to Germany and Ireland with Pyramid to find out more about the arts.

“This year (2020) I’ve been selected to take part in Exchange 62 - a residency programme for artists between Pyramid in Leeds, Venture Arts in Manchester and Artlink in Hull.” **Stephen**

Case Study: Ria

Ria has been a member of our YoYos Group (for young people aged 8+) since she was 14 and has been involved in many exciting projects with them, including creating sheep sculptures for the Tour de Yorkshire Closing Stage event in 2019.

In 2017 she also joined a Development Team and has had several solo exhibitions, including showing work at The Tetley. She sells work through the Pyramid website. Her 'Graffiti Man' poster and postcards (pictured) have sold hundreds of copies.

She is now also on the Members' Council, who take a strategic lead on the development of Pyramid as an organisation.



"Pyramid is development organisation and helps a lot of people in the organisation. We are like an art members family. But definitely not a care agency. Yeah, the staff care about us in different areas of what we struggle in life with, but apart from that they to help us to develop our art and help us through the art world." **Ria**



PYRAMID

phone: 0113 234 6040

email: info@pyramid.org.uk

www.pyramid.org.uk



68 Barkston House, Croydon Street, Leeds LS11 9RT

Registered Charity No. 1094134. Company limited by Guarantee No. 4498181.